

Scale: 1" = 200'
 MSHA Interview Maps
 Based on: UBB - A084
 Received: 4-16-2010
 From: AGM&T
 By: Adron Wilson



47-705-0033 (8-08)
 1746.273
 ACTIVE (GPS)

47-705-0033 (8-08)
 1746.273
 ACTIVE (GPS)

47-705-0033 (8-08)
 1746.273
 ACTIVE (GPS)

47-705-0033 (8-08)
 1746.273
 ACTIVE (GPS)

47-705-0033 (8-08)
 1746.273
 ACTIVE (GPS)

47-705-0033 (8-08)
 1746.273
 ACTIVE (GPS)

G-V-929
 EL 1625.4
 BRIDGES
 3/17/92

C.N.G.
 10372

GLORY HOLE
 TOP ELEV. (LOGAN'S POINT) 1013.10'
 BOT. ELEV. (UBB) 826.99'
 The top 10' of the Glory Hole is 10' diameter.

15' DIAM. VENTILATION
 SURFACE ELEV. 1186'
 BOTTOM ELEV. 772'

VERTICAL TURBINE PUMP
 SURFACE ELEV. 1186.07'
 BOTTOM ELEV. 791.8'

JARRELLS BRANCH
 SURFACE ELEV. 1245.9'
 BOTTOM ELEV. 788.0'

AREA GRADED TO EL. 790

AREA GRADED TO EL. 792

12" VENTILATION
 (Backfilled)
 SURFACE ELEV. 1186.07'
 BOTTOM ELEV. 791.8'

JARRELLS BRANCH
 VERTICAL TURBINE #1 PUMP
 SURFACE ELEV. 1186.07'
 BOTTOM ELEV. 791.8'

AREA GRADED TO EL. 792

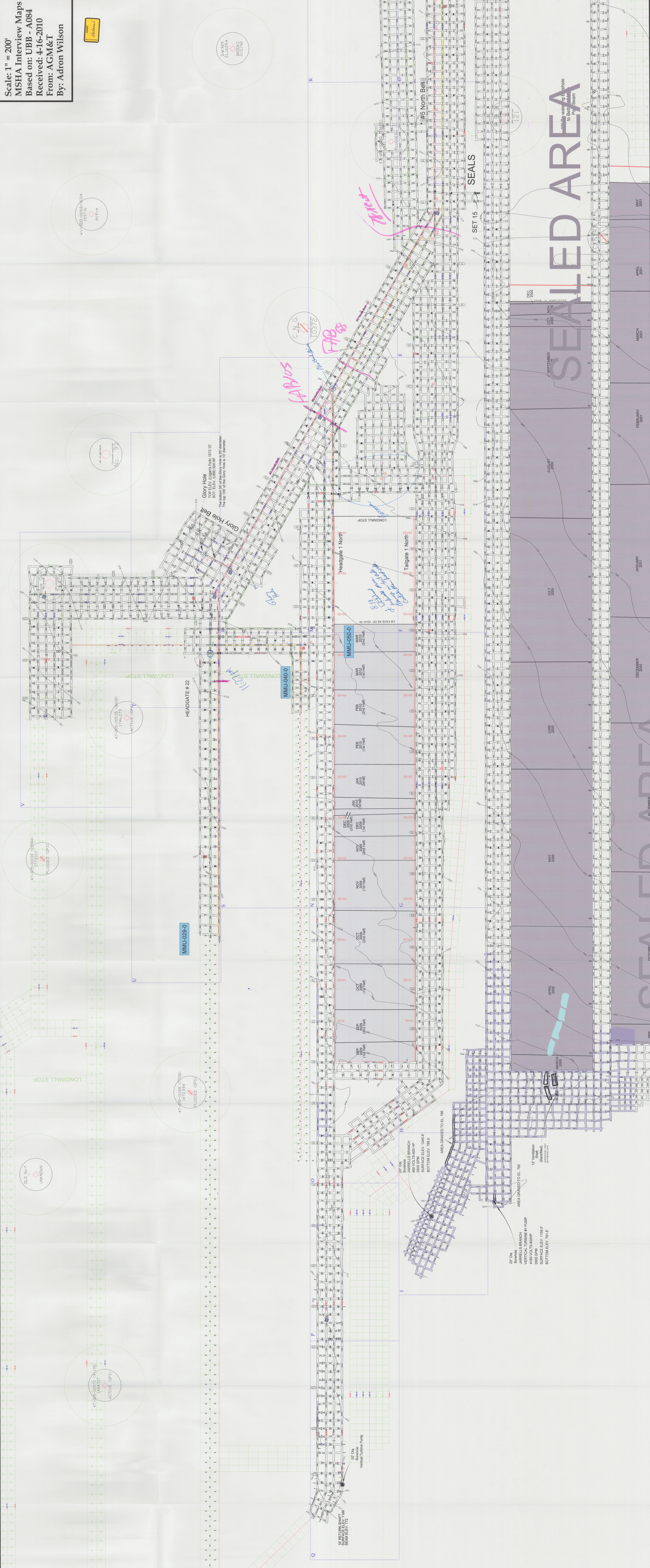
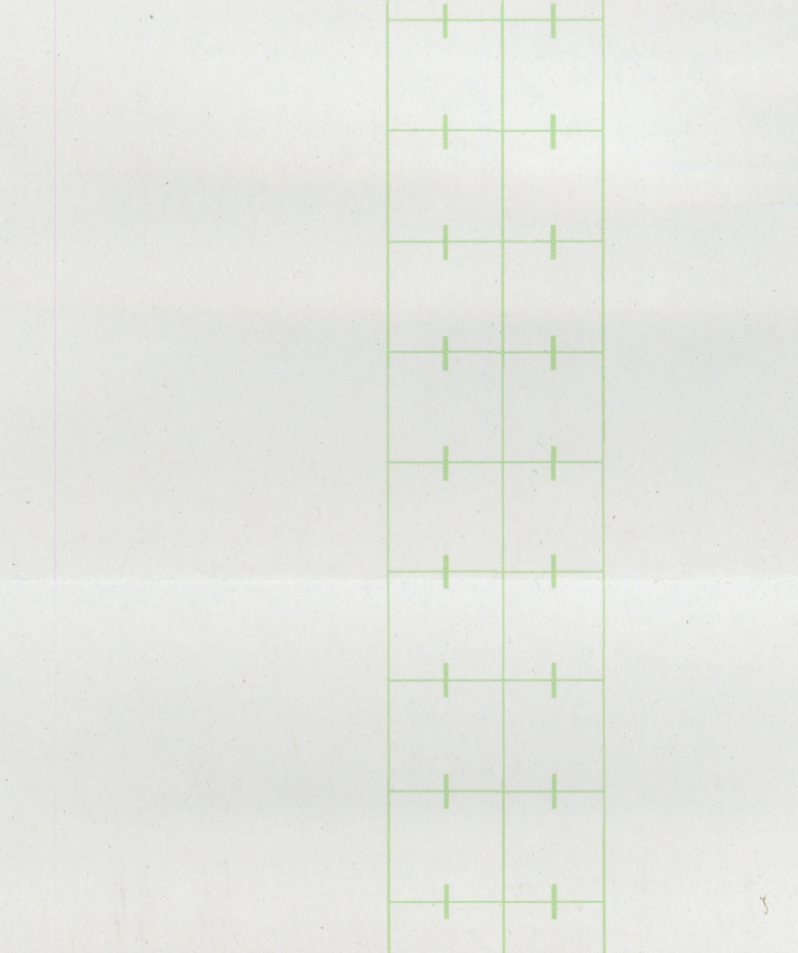
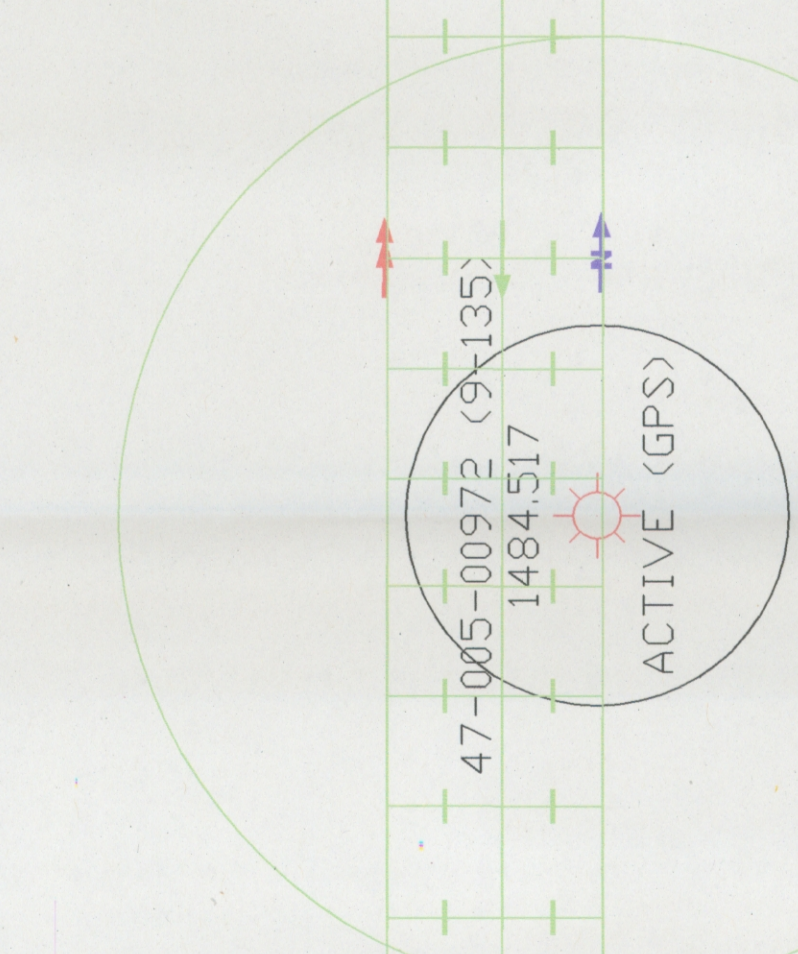
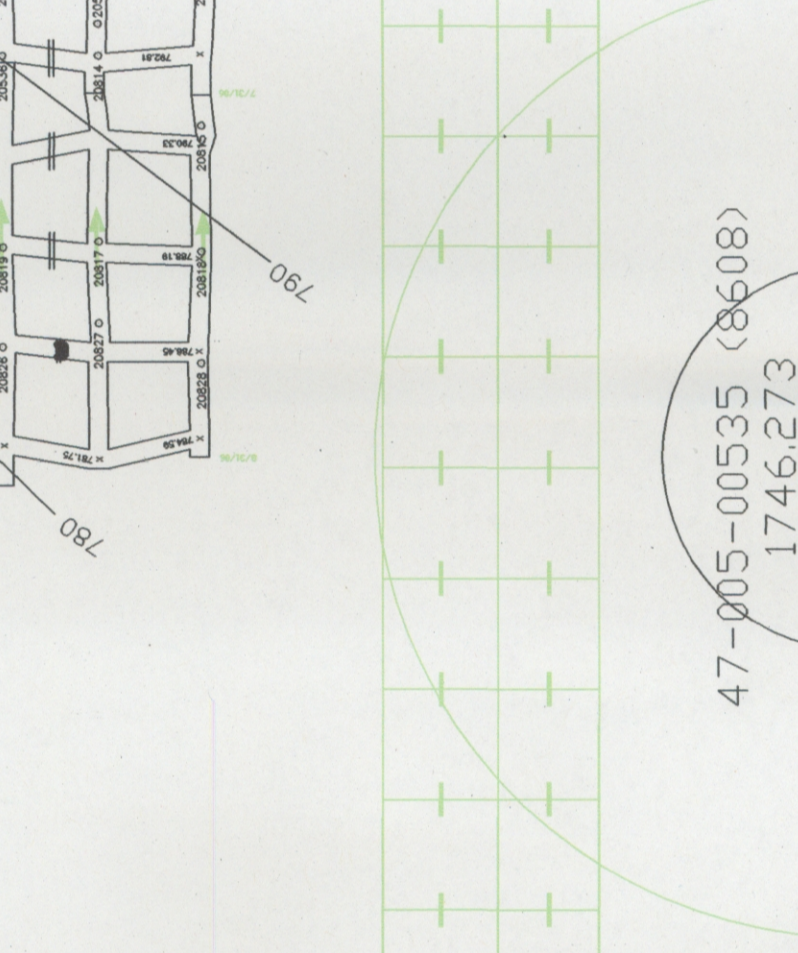
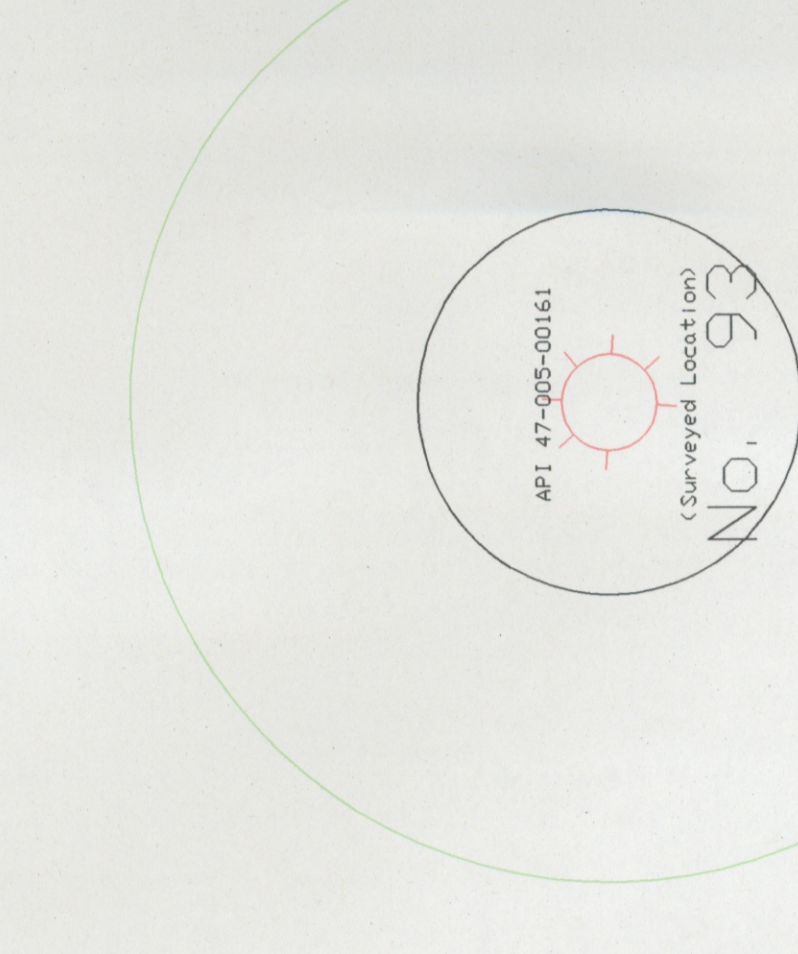
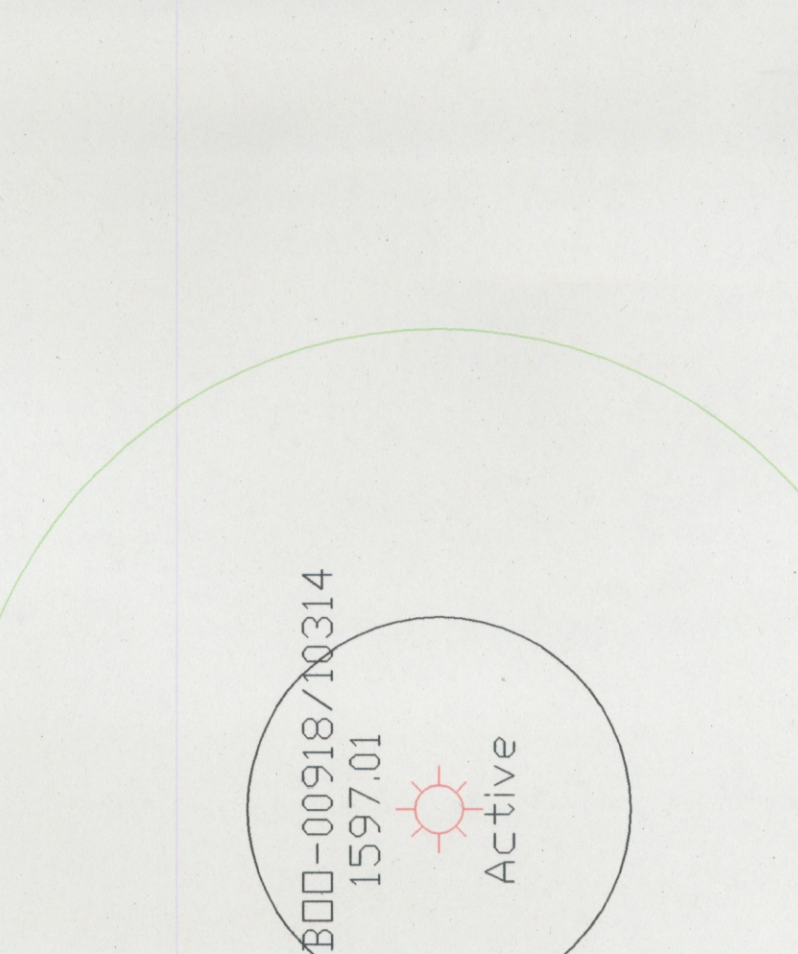
AREA GRADED TO EL. 790

AREA GRADED TO EL. 792

AREA GRADED TO EL. 790

AREA GRADED TO EL. 792

AREA GRADED TO EL. 790



SEALING AREA
 non-water tight E. hole
 to Bottom
 P. Exam

SEPTEMBER 2000
 OCTOBER 2000
 NOVEMBER 2000
 DECEMBER 2000
 JANUARY 2001
 FEBRUARY 2001
 MARCH 2001
 APRIL 2001
 MAY 2001

SEP
 OCTOBER
 NOVEMBER
 DECEMBER
 JANUARY
 FEBRUARY
 MARCH
 APRIL
 MAY
 JUNE
 JULY
 AUGUST
 SEPTEMBER
 OCTOBER
 NOVEMBER
 DECEMBER